



EUROTHERAPY

Relieve Pain the Natural Way



INSTRUCTIONS FOR USE

Basic Operation

Always use this device in accordance with these instructions.

Please note that you should avoid using this device in close proximity to a pacemaker or if you have cancer. If you have a new injury or condition as a result of using the device, such as inflammation and swelling, you should stop using the device. If you are in any doubt you should consult your doctor.

Safety

The product has virtually no side effects when used in accordance with these instructions.

Never use the product near water, for example in the bath or shower.

Only connect to an AC current.

If the tool should overheat, it turns off automatically to avoid damage.

Do not pull the plug out by the mains cable or hold the product by the mains cable.

Remove the cable from the groove in the case housing prior to use.

Remove from socket prior to cleaning.

Do not use if the mains cable is damaged.

Damaged products should be repaired by Eurotherapy only.

Children and persons with restricted physical, sensory or mental skills are prohibited from using this product

These instructions are also available at www.eurotherapy.co.uk

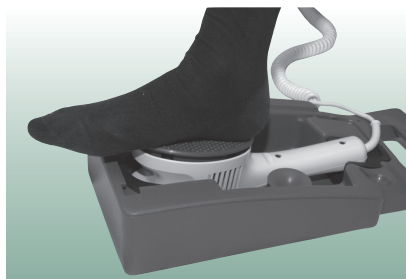
Foot and Toe

Place the Classic in the case positioning directly in front of you with the handle nearest you.

Put the heel of your foot at back of the base plate so that toes hang over the front. This gives benefit to the whole of the foot. If necessary split treatment times between heel and toes, i.e. toes at front of base plate so that heel hangs over back.

Toes can also be treated using the Cosmetic sponge if so directed.

You may also be directed to repeat treatments using the Reflexology Pad.



Ankle

Initial treatment as per feet.

Extra treatments, where necessary, as directed using the Suction Bell around the point of pain on the ankle.



Knee

Initial treatment as per feet.

Treatment should be around the knee joint and not directly on the kneecap (to treat the kneecap directly use the Suction Bell if directed) concentrating mainly on the inside and muscles behind.





Hip, Pelvis & Groin

Place the Classic in the case and position directly behind you in a chair or sofa.

When treating the hip, start from the muscles around the lower spine and progress round to the side of the hip so the case is beside you.

The groin area is treated with leg straight out in front and use the Classic as hand held directly onto the muscles around the groin.



Lower Back

Place the Classic in the case and position directly behind you in a chair or sofa.

When treating the back start on the spine initially but concentrate on the muscles each side of the spine. There is no need to apply pressure, just rest against the Classic. The treatment will naturally radiate out throughout the back.



Stomach

Use the Classic as hand held; make gentle circular movements around the stomach.



Middle Back

Place the Classic in the case, position directly behind you in a chair or sofa.

Angle the unit to a point that will allow you to rest back so that you treat the affected area.

Start on the spine but concentrate on the muscles each side of the spine.

Just rest against the Classic there is no need to apply any pressure.

Chest

Use the Classic as hand held to apply to the front of the chest area (gentle circular motion) or use in its case and place directly behind you in a chair (approx two thirds of the way up your back) this will penetrate through your body to the chest.



Upper Back

Place the Classic in the case and position directly behind you in a chair or sofa.

Rest the case so that the handle is at the bottom and base plate at the top.

When treating the back start on the spine initially concentrating on the muscles each side of the spine.

There is no need to apply pressure, just rest against the Classic.

The treatment will naturally radiate throughout the back.



Neck

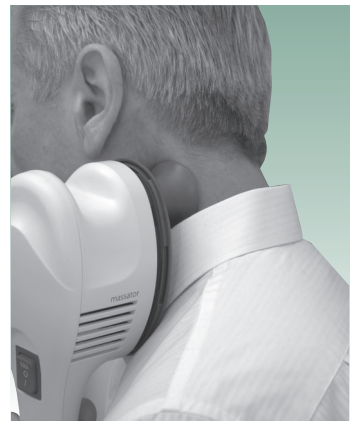
Place the Classic in the case and position directly behind you in a chair or sofa.

Rest the case so that the handle is at the bottom and base plate at the top.

Treat as high up the back as is comfortable; the treatment will radiate up to the neck area.

When treating the back start on the spine initially but concentrating on the muscles each side of the spine. There is no need to apply pressure, just rest against the Classic.

If directed, you can treat the neck area using the Suction Bell.



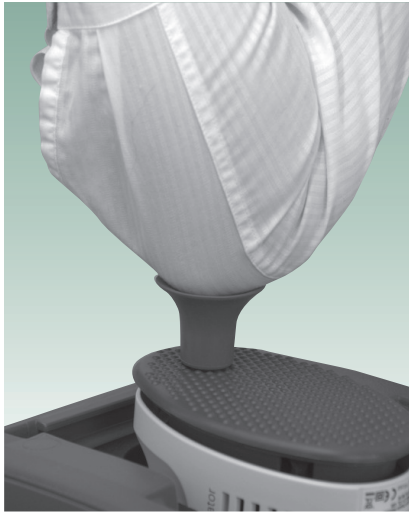
Shoulder

Place the Classic in the case and position directly behind you in a chair or sofa, directly behind the shoulder blade and rest back, without any overdue pressure.

The same treatment can be obtained by using the Classic as hand held, cradle directly into the front of the shoulder. Using the Classic in this way also allows you to treat the muscles at the top of the arm and the rotator cuff joint where the arm joins the shoulder.

If directed, you can also treat the shoulder using the Suction Bell.





Elbow

Place the Classic in the case positioning on your lap. Rest the palm of your hand on the base plate, increasing circulation through the elbow. Use the Suction Bell as directed on the elbow joint.



Wrist

Place the Classic in the case positioning on your lap. Rest the palm of your hand on the base plate, increasing circulation through the wrist. If directed, use the Suction Bell on the wrist joint. If directed, use the Thumb guard against the thumb joint.

Hand, Finger and Thumb

Place the Classic in the case and place directly on your lap.

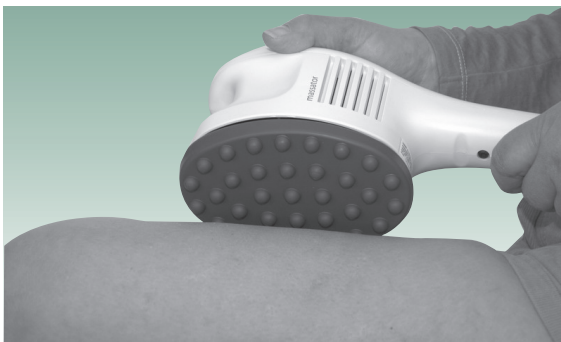


Rest the palm of your hand on the base plate, increasing circulation to the hand.

If directed, use the Cosmetic sponge on the finger joints,

knuckles and palm.

If directed, use the Thumb guard against the thumb joint.



Muscles

Using the Classic as hand held. Apply to any muscle using a gentle circular motion as directed.

Face, Eye, Nose and Ear

Using the Classic as hand held. Treatments to facial areas can be carried out using either the Cosmetic sponge or the Suction Bell.



Scalp

Using the Classic as hand held. Attach the Spiked pad to the base plate. Gently comb backwards across the scalp. There is no need to apply pressure.



ATTACHMENTS

Cosmetic Sponge

Use to treat small joints (Fingers, toes etc) and can be used on facial areas.



Thumb Guard

Use to treat thumb/wrist joints and deep point pressure therapy.



Suction Bell

Use to treat bony areas/joints directly and can also be used on facial areas.



Reflexology Pad

Use on feet as reflexology (tendons and nerve endings) and skin surface for skin conditions.



Spiked Pad

Use to treat scalp.



TECHNICAL DATA & SAFETY

Overall Dimensions	30 x 10 x 10 Cm
Weight (Classic)	1.5 Kilograms
Weight (Case)	1.3 Kilograms
Motor	230V, 50 Hertz AC
Power rating	280-320mA
Oscillation range:	2200rpm (loaded) 2850rpm (unloaded)
Emitted Noise Level	< 50 dBA
Mains Cable Rating	2 x 0.75 mm²
Mains Fuse	3A
Usable Length	3 Metres
External temperature (approx.):	Up to 48 C

Warranty

The Eurotherapy Classic carries a comprehensive warranty, the length of which is covered on your invoice. This covers both electrical and mechanical faults in materials and assembly. Evidence of misuse, or repairs or modifications carried out by unauthorised third parties will invalidate the warranty. Normal wear and tear and any usage outside of that intended will fall outside of the warranty. Please keep your invoice safely as this will act as proof of purchase and validate your warranty. In order to assert a claim under the warranty, please send the complete device to the authorised service address, together with the invoice.

Test Certificate

The Eurotherapy Classic has been tested by TUV to EU Safety and Essential Performance criteria and has met the standards of EN 60335-2-32:2003+A1:2008 // EN60335-1:2002+A11:2004+A1:2004+A12006+A2:2006+A13:2008+A14:2010 +A15:2011 // EN62233:2008.

Cleanliness

Both the Eurotherapy Classic and the accessories should be cleaned with a very mild cleansing agent or alcohol-based cleaning wipe prior to being used by a person. No highly scented or abrasive products should be used as these may affect the cosmetic finish. The body of the device should never be allowed to become wet; it should certainly never be immersed in water or held under a running tap.

Maintenance

The Eurotherapy Classic has been designed not to require any maintenance during normal use. There are no user serviceable parts in the massager and the casing should not be opened or tampered with.



EUROTHERAPY
Euro Therapy UK Ltd
Coopers Yard
Shripney Road
Bognor Regis
PO22 9LN

Tel: 01273 441 986
www.eurotherapy.co.uk